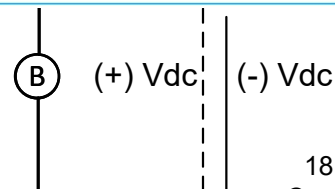
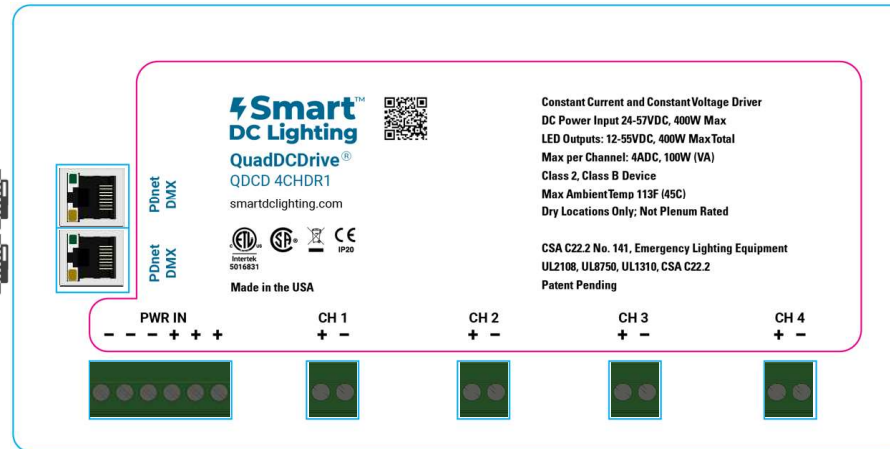
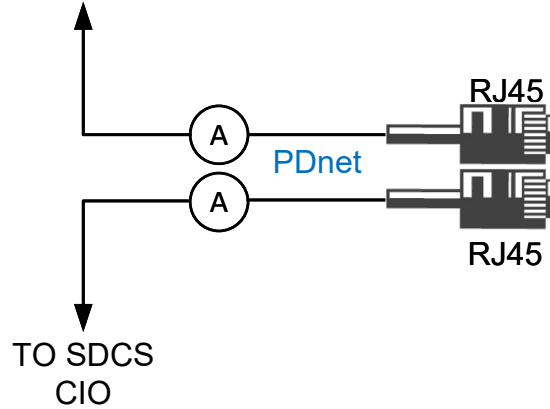


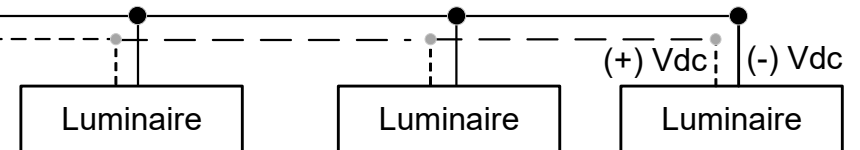
Date	Notes	By

TO ADDITIONAL
QDCD 4CHDR1
DRIVERS




18 AWG
Conductors
(typical)

Luminaires connected to the same channel must have the same mA rating. Total mA may not exceed 4A per channel. Total Wattage may not exceed 100W per channel or 400W per unit



WIRE LEGEND	
	CAT 5-E (CLASS 2)
	48-57 VDC, 18AWG (1PWR/1GND min.)

<div>Tols:</div> <div>.x = 0.25"</div> <div>.xx = 0.10"</div>	Revision Drawn By Date Level Approved	A2	<div> 13450 EM 529 RD HOUSTON, TX 77041</div>	A
		DVR		
		06/30/25		
		REL1		
	No scale	QDCD 4CHDR1 WITH STATIC COLOR TEMPERATURE CONSTANT CURRENT LUMINAIRES ON CHANNEL ONE WIRED IN PARALLEL		