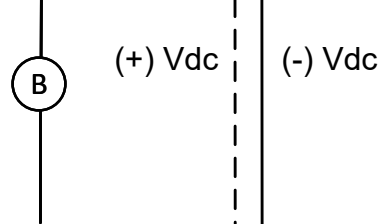
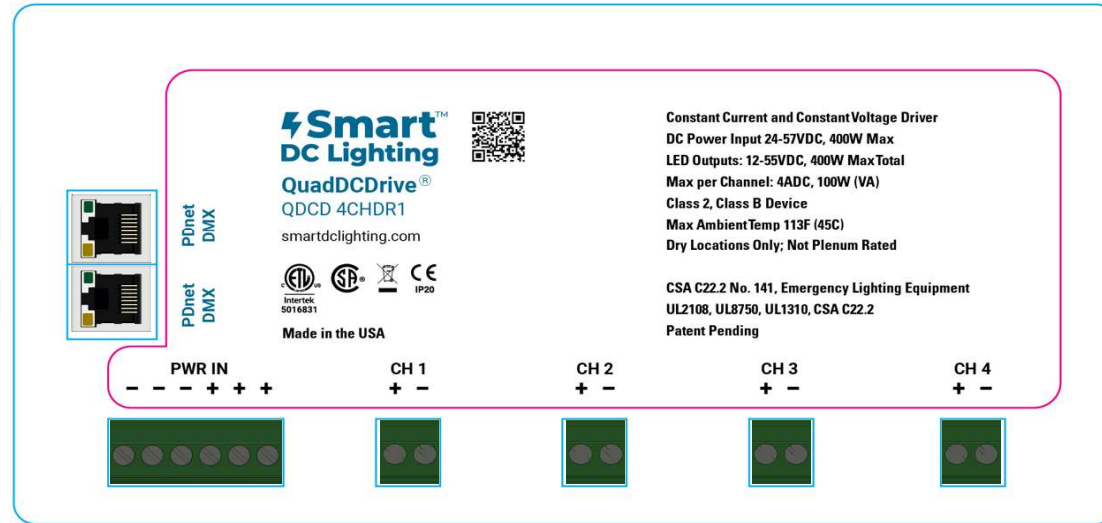
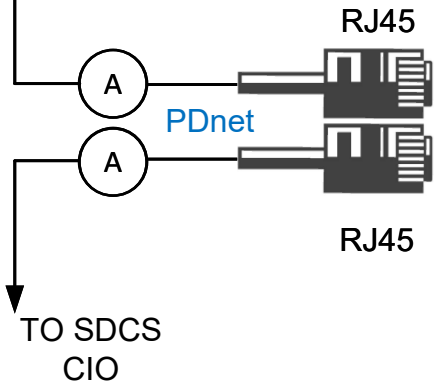


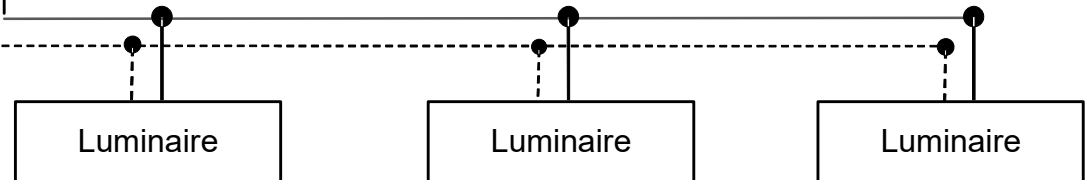
Date	Notes	By

TO ADDITIONAL
QDCD 4CHDR1
DRIVERS




All luminaires connected to the same QuadDCDrive® must be rated for the same voltage, 24-57VDC, up to 4A output and 400W total across all channels.

18 AWG
Conductors
(typical)



WIRE LEGEND	
— (A) —	CAT 5-E (CLASS 2)
— (B) —	48-57 VDC, 18AWG (1PWR/1GND min.)

Tols:
.x = 0.25"
.xx = 0.10"

Revision Drawn By Date Level Approved	A2	 13450 EM 529 RD HOUSTON, TX 77041	A
	DVR		
	06/30/25		
	REL1		
	No scale	QDCD 4CHDR1 WITH STATIC COLOR TEMPERATURE CONSTANT VOLTAGE LUMINAIRES ON CHANNEL ONE WIRED IN PARALLEL	