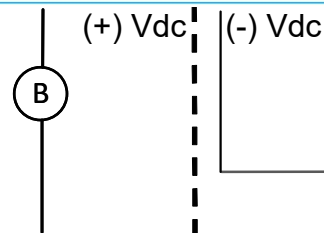
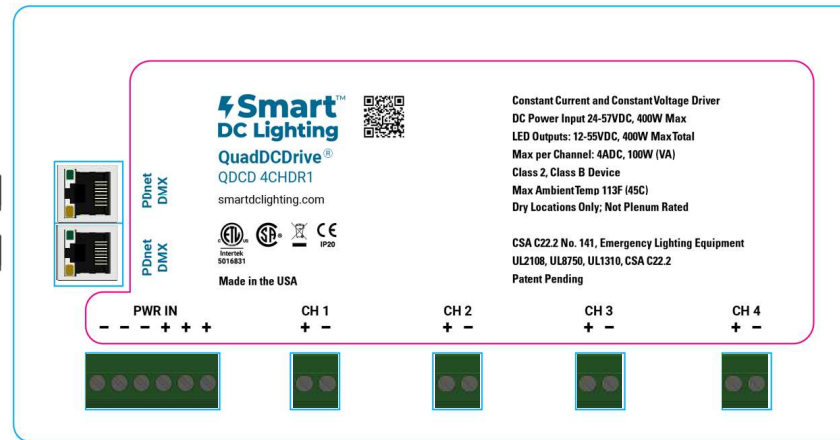
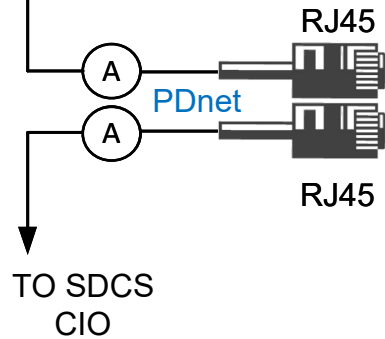
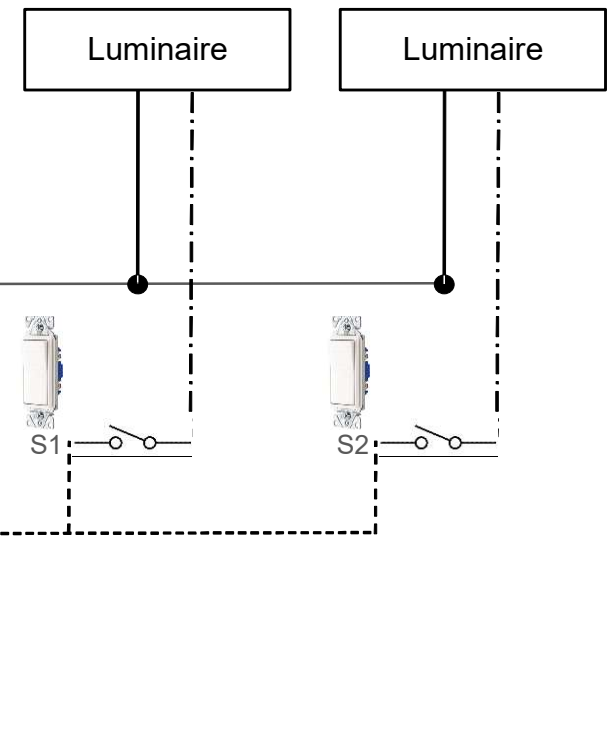


Date	Notes	By

TO ADDITIONAL
QDCD 4CHDR1
DRIVERS




18 AWG
Conductors
(typical)



WIRE LEGEND	
	CAT 5-E (CLASS 2)
	48-57 VDC, 18AWG (1PWR/1GND min.)

Tols:
.x = 0.25"
.xx = 0.10"

Revision Drawn By Date Level Approved	A2	 13450 EM 529 RD HOUSTON, TX 77041	A
	DVR		
	06/30/25		
	REL1		
	No scale	QDCD 4CHDR1 WITH STATIC COLOR TEMPERATURE 24VDC CONSTANT VOLTAGE LUMINAIRES AND LIGHT SWITCHES ON CHANNEL ONE WIRED IN PARALLEL	